

NEIGHBORS

FAUNTLEROY COMMUNITY ASSOCIATION



DECEMBER 2016

FCA FORMALLY REQUESTS STUDY OF RESTRICTED PARKING ZONE

As reported in the September *Neighbors*, FCA's parking committee has been surveying the neighborhood to gather data about where, when, and how many non-resident vehicles are parking on streets in Restricted Parking Zone #3 - the zone emanating from the ferry terminal that is to protect against overnight parking by vehicles without an RPZ#3 permit.

Thanks to this committee's work, the parking formula required by the Seattle Department of Transportation to begin a parking study has been met. In mid October, the FCA Board

sent the complying data to appropriate city department directors, requesting that they approve such a study.

Additional copies went to local elected officials for their reference. On Nov. 30, the committee was to meet with Seattle City Council-member Lisa Herbold for further discussion and assistance in resolving parking issues.

On the same topic, during the Oct. 27 open house hosted by Washington State Ferries in Fauntleroy, committee members had an opportunity to speak with Assistant Secretary Lynn Griffith about employee parking, in particular that some ferry employees have been parking in violation of RPZ requirements instead of in the lot provided for them behind the Fauntleroy Schoolhouse Community Center. This topic was on the



agenda for the Fauntleroy Ferry Advisory Committee's Nov. 17 meeting with ferry officials.



FAIR TO INTRODUCE WEST SEATTLE TO DIFFERENT WAY OF GIVING

On **Saturday, Dec. 10**, Fauntleroy will host the first-ever West Seattle Alternative Giving Fair to offer a different way of giving this holiday season.

Co-sponsored by Admiral, Alki, and Fauntleroy United Church of Christ congregations at Fauntleroy, the fair will feature some 20 non-profits at work locally and around the world. Representatives will be on hand from **10 am to 2 pm** in Fellowship Hall to explain what they do, suggest volunteer opportunities, and provide an alternative-gift card for donations to honor family members, teachers, coaches, or others.

Gifts big or small will provide food, emergency support, companionship, and other resources for healthier communities and a kinder world. A craft area will engage young children in making simple gifts while parents browse.

The list of participating agencies includes Food Lifeline, West Seattle & White Center food banks, Westside Baby, Delridge Neighborhoods Development Association, Southwest Youth & Family Services, the Kenney Foundation, Providence Mount St. Vincent Foundation, Earth Ministries, Southwest Seattle Historical Society, YMCA of Greater Seattle, Reading With Rover, Friend to Friend America, College Access Now, Heifer International, and Splash.

IN THIS ISSUE

Community policing.....	2
Ferry schedule.....	3
Pet-waste study.....	4
Traffic, parking changes.....	4
South Seattle College Foundation	5
Upcoming events	6
Westside Neighbors Network	6
From the president.....	8

POLICE CONTINUE WORK ON MICRO COMMUNITY POLICING PLAN

In the spring of 2015, the Seattle Police Department released a draft "micro community policing" plan for Fauntleroy. Based on crime statistics and comments from



Who knew that catapulting marshmallows could be so much fun?! These boys and their parents were among the estimated 1,300 area residents at the Oct. 23 Fauntleroy Fall Festiva. The Lincoln Park Co-Op Preschool provided the game and a catapult kit to take home. The festival has been bringing the community together since 2002. Photo courtesy Becky Huntley

residents and business owners, the plan itemized three priorities for improving public safety in the neighborhood:

- early-morning motorcycle noise from ferry commuters
- burglaries, car thefts, and other property crimes.
- underage drinking, car prowls, and other issues associated with Lincoln Park

Researchers from Seattle University's Criminal Justice Department were involved then and returned to the neighborhood this past summer for more feedback during an FCA-organized public meeting.

The 21 residents who attended had much the same priorities as in the draft plan: burglaries, car prowls, traffic issues, graffiti, 911 response time, and concerns associated with problem properties and public parks.

They asked for more traffic and parking enforcement near the ferry terminal, night patrols in parks, swift graffiti removal, and speed bumps to slow traffic on certain residential streets.

This fall researchers employed a citywide online survey to dig deeper, soliciting feedback about very specific public-safety concerns. When tabulated, these findings will refine micro community policing plans for each neighborhood in Seattle, including Fauntleroy, with the goal of making police programs and actions even more responsive.

FCA'S BUSINESS & ORGANIZATION PARTNERS

Brace Point Law

Bruce Butterfield, Berkshire Hathaway Real Estate

Cherie's Canine Casa

Dance! West Seattle

Daystar Retirement Village

Devir Americas, LLC

DSquared: Occasions With Soul

Ediez Salon at Fauntleroy

Endolyne Joe's Restaurant

Fauntleroy Children's Center

Fauntleroy Church, United Church of Christ

Fauntleroy Community Service Agency

Ocean Light Zen Center

Pilates At Fauntleroy

Sheppard Bookkeeping Services

Stuffed Cakes

Synergy HomeCare

The Kenney Retirement Community

West Seattle and Fauntleroy YMCA

West Seattle Blog

Wildwood Market

FCA LEADERSHIP

Mike Dey, president

206-661-0673; msdey50@aol.com

Alexis Zolner, treasurer

206-935-6721; aazathome@outlook.com

Shannon Ninburg, secretary of record

Gary Dawson, chairman, Ferry Advisory Committee

206-937-7163; garyann@quidnunc.net

Vicki Schmitz-Block

Kathleen Dellplain

Richard Hansen

Susan Lantz-Dey

Jewel Von Kempf

Bruce Butterfield

David Haggerty

Frank Immel

Michael Lieberman

Martin Westerman

Judy Pickens, writer/editor, judy_pickens@msn.com

Irene Stewart, webmaster/Facebook

FCAcommunications@gmail.com

TRIANGLE ROUTE SCHEDULE IMPROVEMENTS

FERRY OFFICIALS HEAR LONG LIST OF COMPLAINTS, SUGGESTIONS

By Gary Dawson

Starting in mid-2014, the Fauntleroy Ferry Advisory Committee participated on a panel hosted by Washington State Ferries to study and rewrite the triangle route schedule. This panel included members of the Vashon and Southworth advisory committees, Ferries staff from various departments (including vessels and terminals), and representatives of King County Metro and Kitsap Transit.



The study aimed to create a new schedule to accommodate the replacement of two smaller and slower vessels assigned to this route with faster vessels having a larger vehicle capacity.

An additional objective evolved during the series of monthly meetings to establish more efficient tolling procedures at Fauntleroy.

"Fix Fauntleroy first" is always the mantra of ferry users when they voice complaints when, to maintain the departure schedule, vessels leave the Fauntleroy terminal only partially full.

Various suggestions were discussed about improving tolling and a process was developed to be implemented during late spring of this year. Before that process could bear fruit, two events occurred.

First, because of vessel operational issues that continue occasionally today, one or both of the two smaller vessels returned to the triangle route, causing schedule and loading disruptions.

Second, for various reasons internal to Ferries, when the agreed-upon tolling procedure was introduced, it was not completely followed. Thus, congestion and disruption at the Fauntleroy terminal continued through the summer, much to the distress and anger of commuters.

In late September, after having made a commitment to resolve the issues at Fauntleroy, Ferries began hosting open houses at triangle-route locations. The objective was to have an open dialogue among state staff, ferry users, and local residents. In addition, Ferries solicited comments in written form and, all told, received more than 400 on a wide range of issues.

Oral and written comments were all brief and you can find them on the *West Seattle Blog* of Nov. 6. Many focused on the need for an efficient tolling process and many others were reminiscent of topics that have arisen over time about Fauntleroy.

The most frequently mentioned were expanding the capacity of the dock while also adding an overhead passenger loading structure, replacing waterfront residences with ferry parking lots, eliminating all local parking on the west side of Fauntleroy Way SW from The Kenney south to the dock, and others equally invasive.

Regarding the dock itself, Ferries established some years ago that, because of current seismic requirements and deterioration of the structure, it will at some point require a major rebuild or replacement.

Ferries staff sorted all the comments by category and location and within the next couple of months will assemble a public task force to review them in depth. The goal is to improve service at Fauntleroy by next summer while striving for long-term solutions.

On behalf of your ferry advisory committee, I thank all the area residents who attended the Oct. 27 open house. Be assured that we will be working with the task force toward making the tolling and loading process here more efficient while resisting efforts that might add to the adverse effects of ferry operations on our community.

FOLLOW SERVICE-IMPROVEMENT PROCESS

In response to comments made during its October series of open houses, Washington State Ferries now has a "Triangle Service Improvement" webpage at www.wsdot.wa.gov/ferries/outreach/triangle.

It provides documents, clarifications, updates, and a comment/question section about the work of the public task force charged with recommending improvements to the Vashon/Southworth/Fauntleroy route schedule.


FERRY COMMITTEE SEEKS NEW MEMBER

The Fauntleroy Ferry Advisory Committee, a panel of three volunteer members appointed by our King County councilmember, is losing valuable member Alan Mendel.

Alan is moving from Fauntleroy and will be resigning the appointment he has had since moving here from Vashon Island, where he had been chairman of that advisory committee. We had opportunity to develop a very good relationship while working together on many ferry-related committees and studies. Alan brought a wealth of knowledge and experience that has been extremely helpful to our committee. Thank you!

Now someone else in Fauntleroy has the opportunity to serve on the committee with Charles Sawyer and me. If you think you could be interested in advising about ferry operations here and interacting with advisory-committee members from other communities, contact me to start a conversation (garyann@quidnunc.net or 206-937-7163).

If you're simply interested in knowing more about what our advisory committee is doing or how it ties in with other communities, the state, or elected officials, let me know; I'll be happy to give you a briefing. - Gary Dawson



the
YMCA

**FOR YOUTH DEVELOPMENT
FOR HEALTHY LIVING
FOR SOCIAL RESPONSIBILITY**

seattleyymca.org

STUDENT STUDY SHOWS NEED FOR MORE DOG OWNERS TO SCOOP

By Judy Pickens

Nearly every day, elementary students from Taproot School venture from their classroom at the Fauntleroy Schoolhouse Community Center into Fauntleroy Park for nature study. This practice made them the logical choice to update data about how well dog owners are adhering to the city's scoop law.

Students of a similar age conducted the first "poop study" in 2004 and a follow-up in 2008, at the request of the Fauntleroy Watershed Council. Pet waste is a serious concern in the city because rain carries bacteria and parasites from dog feces into urban creeks and Puget Sound. Both can make people sick and the bacteria can prompt algae growth that deprives juvenile salmon of oxygen.

In April, July, and October, Taproot students surveyed the same 600-foot segment of trail as was done the prior years, counting waste deposits. Back at school, they marked the locations on a large map to aid in their reaching conclusions for their report to watershed-council representatives.

After the first survey, the students made a point of talking with dog owners while in the park, installed new signs and bag dispensers at all park entrances, and regularly brought used plastic bags to replenish the dispensers.

They found few deposits in the summer but many during the spring/fall rainy season. Most were near the SW Barton Street park entrance and along a trail segment in the middle of the park that curves in a broad arc. These counts, plus observing dogs and owners in the park, led the students to conclude that letting dogs run off



Student researchers displayed survey data on a large map in order to identify problem areas along a main trail in Fauntleroy Park. Photo courtesy Taproot School

leash is common in Fauntleroy Park. To stay dry on rainy days, some owners simply park, let their dogs run into the park, and hold up in the car until their dogs return. The students also posited that dogs running ahead of their owners around the wide curve defecate out of owners' sight.

The students asked the watershed council to work with Seattle Parks on additional signage, which is being done. They committed to continue to bring bags for the dispensers and to repeat the study to see if signage changes prompt more dog owners to comply with the scoop requirement.

FCA WORKING WITH CITY TO FINE TUNE TRAFFIC, PARKING CHANGES

Changes this summer at and near the triangle in Fauntleroy's retail area brought much-needed improvements to traffic flow, parking, and safety, some of which the neighborhood had been seeking for more than 40 years. With so many changes at once, though, the need for a little fine tuning was expected and is in the works.

As a veteran of dozens of transportation-related meetings and conversations over the years, FCA board member Marty Westerman has taken the lead in holding the Seattle Department of Transportation to agreements

and suggesting fixes where changes aren't playing out exactly as hoped:

Improve signage and change street and curb paint at the load zone on the SW Brace Point Dr. side of the triangle. Signage should set load -zone hours from 7 am to 6 pm, then two-hour parking until 2 am, when the area's restricted parking zone applies. The paint should be changed from red (signifying no parking) to yellow (signifying load zone).

Restore lost parking. The re-design was to add as many spaces as it eliminated but missed the mark by six. FCA has proposed small changes to sign locations to balance the equation.

Add "One Way" signs to reinforce the "Do Not Enter" sign at SW Brace Point Dr. That single sign isn't visible to all drivers and several near-collisions have happened as a result.

Improve the sight line to the west for drivers pulling out of California Dr. SW (behind the church) onto California Ave. SW. Eliminate two parking spaces and paint the curb red. This change was part of the re-design but was somehow overlooked.

COLLEGE SEEKING TO EXTEND FREE '13TH YEAR' TO WEST SEATTLE HIGH GRADUATES

Affordable access to higher education is a hot topic across the country and, in our own backyard, the South Seattle College Foundation has pioneered a way to make it more than an aspiration

The 13th Year Promise Scholarship program began by offering one free year of schooling at South Seattle College to any graduate of Cleveland High School's class of 2008. It expanded in 2011 to Chief Sealth International High School, added Rainier Beach High School in 2013, and is poised to incorporate West Seattle High School.

The program aims to increase access to higher education, especially for students from under-represented groups (students of color, low-income students, and first-generation college students). It is based on research from the State Board for Community and Technical Colleges demonstrating that a high-school diploma and one year of college get students to a critical tipping point: being able to achieve a living-wage job and/or continue their education.

More than half of the students who have participated in the program so far say they would not have attended college if not for their 13th Year Promise scholarship.



In 2011, the college established a "readiness academy" to further increase student success by supporting them in their transition from high school to college. This academy engages and educates students about financial aid, academic and financial resources, and classroom etiquette, then pairs them with peer leaders and academic advisers. Thanks to this level of support, the retention rate for 13th Year Promise students from fall to winter quarter 2016 was more than 90%.

In order to extend the program to West Seattle High graduates, the South Seattle College Foundation must raise an additional \$1.5 million by fall 2018 to meet its goal of \$8.1 million. Any gift greater than \$5,000 will be matched 1:1 by the foundation's board of directors.

Find out more about investing in the next generation of professionals, academics, and informed citizens at www.southseattle.edu/13th-year. The foundation invites specific questions at ssccfoundation@seattlecolleges.edu or (206) 934-5809.



SUBSTATION FUND RAISING UNDER WAY

The effort to purchase the former Seattle City Light substation property in Fauntleroy as public open space is being aided by a schematic of what the site might look like when fully landscaped.

Over the summer, FCA won a \$4,000 matching grant for the artwork from the Seattle




Department of Neighborhoods and is now using it in fund raising. The city's price tag on the 6,848 sf parcel at 4520 SW Brace Point Dr. is \$245,000.

Contact Shannon Ninburg with questions about the project and to explore donation options at 206-851-1457 or shannonninburg@yahoo.com.

ABOUT AREA BUSINESSES

Lonjina Verdugo and Blaine Fielding are working long hours to open **Wildwood Market** by mid December at 45th Ave. SW and Wildwood Place SW. This updated version of the neighborhood corner store will offer dine in, take out, and staples for fridge and pantry. Follow progress at www.facebook.com/wildwoodmarket.

Ocean Light Zen Center is the newest tenant at the Fauntleroy Schoolhouse Community Center. Owner Michael Schutzler is offering meditation practice every Sunday morning from 9 to 11 in Room 4. Find out more and join the mailing list at oceanlightzen@gmail.com.



OCEAN LIGHT ZEN
A WELCOMING MEDITATION COMMUNITY

Practice 9 am - 11 am Sundays
Details or to arrange first-time instruction:
oceanlightzen@gmail.com

Room 4, Fauntleroy Schoolhouse
9131 California Ave. SW, Seattle 98136

Let Us Help You At Home

Senior Care • Respite Care • Alzheimer's • Dementia
Surgery Recovery • Pregnancy/New Moms
Hourly/Daily/Weekly • No Contracts or Min. Hours

SYNERGY HomeCare **FREE In-Home Assessment**
206-420-4934
SynergyHomeCare.Com

RAINY SEASON EVENTS

SANTA PHOTOS: Gail Ann has invited that jolly gent to the Fauntleroy Schoolhouse Community Center to pose with children and families for seasonal photos on **Sat., Dec. 10**, and **Sun., Dec. 11**, by appointment. For details, call her at 206-371-0585.

ALTERNATIVE GIVING FAIR: Make a difference through a different way of giving at West Seattle's first **Alternative Giving Fair** on **Sat., Dec. 10, 10 am - 2 pm** in Fellowship Hall at Fauntleroy Church. Learn about and make a gift donation to proven programs that feed the hungry, support elders, care for creation, and strengthen community for all children. Details at www.fauntleroyucc.org or 206-932-5600. Co-sponsored by Admiral, Alki, and Fauntleroy United Church of Christ congregations; free.

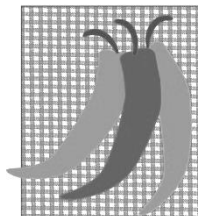
CHRISTMAS CONCERTS: Music director/composer Bronwyn Edwards will direct three free holiday concerts this season in the Fauntleroy Church sanctuary. The South Seattle College Community Choir will perform **Sun., Dec. 11, at 7 pm**, accompanied by string trio and piano. The church's own choir will team with Peace Lutheran's choir on **Sat., Dec 17, at 7:30 pm** and again on **Sun., Dec. 18, at 4 pm** to perform new arrangements of familiar Christmas songs accompanied by percussion, violin, flute, and guitar.

LINCOLN PARK: Get down and dirty at twice-monthly work parties hosted by Friends of Lincoln Park to restore and maintain natural areas. Upcoming dates: third Sundays (**Dec. 18, Jan. 15, Feb. 19**) and first Saturdays (**Jan. 7, Feb. 4, March 4**). Muster at **9 am** at the kiosk in the north parking lot with sturdy shoes, long pants, work gloves, water, and layers suited to the weather. Contact: Sharon Baker at sabaker41@gmail.com or 206-464-1068.

FAUNTLEROY WATERSHED COUNCIL: Residents wanting to steward natural areas are welcome **Thursday, Jan. 12**, and **March 9** at **7 pm** at Fauntleroy Church. Contact judy_pickens@msn.com or 206-938-4203.

FCA BUSINESS: Regular monthly meetings will be **Tuesday, Jan. 20, Feb. 14, and March 14** at **7 pm** in the conference room at the Fauntleroy Schoolhouse Community Center. For agenda details, contact FCA President Mike Dey at msdey50@aol.com or 206-661-0673.

CHILI COOK-OFF: Bring your taste buds to Fellowship Hall at Fauntleroy Church on **Saturday, March 4, 6 - 8:30 pm**, for the **sixth annual Fauntleroy Chili Cook-Off**. Vote for your favorite chili and settle your stomach with cornbread and a root-beer float. Tickets at the door and details a few weeks ahead at www.fauntleroyucc.org.



'VIRTUAL VILLAGE' CONCEPT EXPANDING TO WESTSIDE

In 2002, a neighborhood in Boston pioneered what has come to be known as the "virtual village" model of neighbors caring for neighbors so that those who wish are able to age in place.

The concept has since spread to more than 200 communities nationwide, including three in Seattle, and is now taking root in West Seattle.

Here it's being called "Westside Neighbors Network." The goal is interdependence, not isolated independence, so that residents can connect with one another and with resources that support positive aging.

One call to paid staff will bring the coordinated services needed, from volunteers able to do simple tasks (such as short-term pet care) and from vetted service providers for more complex needs (such as plumbing). Members will also have access to social and educational events that support friendships and staying connected.

Annual membership fees vary widely around the country, from a few dollars where sponsor support is available to a few hundred where it is not. Members may be individuals or couples, with or without adult children living nearby.

Experience has shown that getting a virtual village up and running takes about four years, explained Virginia Pellegrino, a member of the westside core group.

"We're just finishing our second year of planning and are working toward establishing a board," she explained. "We've also recently started making presentations around the community."

If you find this concept attractive for yourself or for someone you love, consider getting on the group's mailing list and perhaps lending a hand in some way to create this sustainable non-profit network in West Seattle.

Learn more at westsideneighborsnetwork.org or email westsideneighborsnetwork@gmail.com.

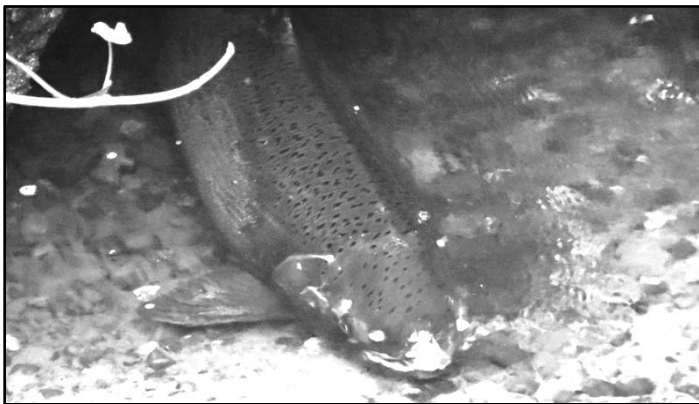
GOING GRAY IN FAUNTLEROY

WEST SEATTLE BLOG

West Seattle news, 24/7

westseattleblog.com

Breaking news? Text or call 206-293-6302.



"Wally" survived more than a week in Fauntleroy Creek, waiting in vain for a mate. Photo courtesy Mark Ahlness

MAIN EVENT FOR SCHOOLHOUSE CENTENNIAL TO BE MAY 21

The venerable Fauntleroy Schoolhouse will reach the century mark next year and the committee that's been at work since 2013 is bringing the celebration into focus.

The main event will be Sunday, May 21, 11:30 am - 3:30 pm. After a "group hug" photo, the flag that likely last flew when the school closed in June 1981 will be hoisted on a new flagpole donated by Christy Gamrath and family. Expect speakers, music, games, and of course, food.

Alumni and former staff members are invited to donate or loan photos and memorabilia for display by emailing faunt.schoolhouse100years@gmail.com. Each item should include a description, names, and date. If you're an alumnus, use that address to submit your name and years of attendance for the growing alumni database.

Finally, learn about committee meetings and other ways to help at www.fauntleroycentennial.org.

IMMEL JOINS FCA BOARD

At its October meeting the FCA Board welcomed Frank Immel as a member. A long-time resident of West Seattle, he and wife Kim now live on Fauntleroy Way SW. He works in marketing for Global Diving and is currently president of the Puget Sound Maritime Historical Society.

In early December, Alexis Zolner officially replaced long-time FCA treasurer Phil Sweetland. She can be reached at 206-935-6721 or aazathome@outlook.com.

DEFYING PREDICTIONS, COHO SPAWNERS REWARD WATCHERS

Spawning season on Fauntleroy Creek closed Nov. 18 with a total of seven coho spotted by salmon watchers.

The season began Oct. 20, several days earlier than in years past, when five fish entered the spawning reach across Fauntleroy Way SW from the ferry terminal. Darkness fell before any redd building could be observed.

A single male came in on Nov. 5, then another, subsequently named "Wally," arrived the following day. The 50 area residents who came to an "open creek" that afternoon got to see him lazing in the fish ladder, perhaps waiting for a mate.

Watchers gave him a name because he defied the custom of spawning and dying within 24 hours. A week after entering the creek, Wally still had enough energy to make a run up the fish ladder but was visibly deteriorating when last seen on Nov. 14.

"Seven spawners isn't a lot but it's seven more than last year," noted veteran watcher Dennis Hinton, "and during our watch, nearly 70 people got to see these amazing fish right here in the neighborhood."

The season's robust return of coho to Puget Sound defied the state's warning that not enough eggs would be available for this school year's Salmon in the Schools program. Most of the 71 participating schools in Seattle rear coho - and will start doing so again in January. The Fauntleroy Watershed Council has frozen carcasses from the Soos Creek Hatchery so that many fourth- and fifth-graders in West Seattle can have a lesson in biological systems during classroom dissections this winter.

Worshiping and learning together, caring for ourselves and others, and working to preserve justice, peace, and the sanctity of God's world.



10 AM Sunday worship
206-932-5600
www.fauntleroyucc.org
9140 California Ave. SW



Bruce Butterfield
Realtor & Seniors Real Estate Specialist

www.BruceButterfield.com 206-932-2400

**3rd Generation
Fauntleroy!**

**BERKSHIRE
HATHAWAY**
HomeServices

*THE
Kenney*

West Seattle's Premier Provider of Senior Services

Ellen Johanson

Director of Church Relations, Community Outreach,
and The Kenney Foundation

7125 Fauntleroy Way SW, Seattle, WA 98136-2008
(206) 937-2800 • Direct (206) 935-8285
ejohanson@TheKenney.org

ABOLISHING DISTRICT COUNCILS WOULD GREATLY DIMINISH VOICE OF NEIGHBORHOODS IN CITY

Although another year is almost over, this is not the time for any of us to kick back, at least not yet. No, I'm not talking about the recent election. Rather, I'm talking about politics closer to home.

Several weeks ago, Mayor Murray submitted two proposals to the City Council: Resolution 31718 and Council Bill 118834. They would defund and decertify the city's 13 district councils as well as the City Neighborhood Council and replace them with what's been labeled a "community involvement commission."

The mayor's analysis is that racial and ethnic minorities, immigrants, gays and lesbians, renters, and other under-represented groups aren't being heard within the current neighborhood structure. While this may or may not be true, eliminating district councils and the City Neighborhood Council is throwing the baby out with the bath water. It's also a bit vindictive since the district councils did not support one of the mayor's recent initiatives.

In my experience, district councils work well representing their various constituents. FCA and other area community associations send representatives to the Southwest District Council, which discusses common interests and makes action recommendations to city

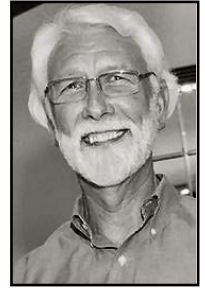
By FCA President Mike Dey

departments through the City Neighborhood Council.

If gaps in representation exist, simply adding councils or mandating that existing councils truly represent all of their constituents would be much more helpful in both the short- and long-run and be far less disruptive. Our City Council member, Lisa Herbold, does not support these mayoral proposals but she appears to be in the minority.

For Fauntleroy, abolishing district councils would mean that we could no longer approach city government in a coordinated fashion. Community associations in West Seattle would no longer be able to sit down as a group with city departments but rather would have to express our concerns one by one, primarily using the Internet. The mayor's strategy, whether intended or not, appears to be one of divide and conquer.

The FCA Board has made these concerns known to all members of the City Council, asking that they reject the mayor's proposals or amend them to address representation shortcomings so that all of Seattle's neighborhoods continue to have a voice through district councils and the City Neighborhood Council.



KEEP UP TO DATE ON FAUNTLEROY EVENTS ON FACEBOOK
If you're a member of Facebook, go to www.facebook.com/FauntleroyCommunityAssociation.

WWW.FAUNTLEROY.NET

P.O. BOX 46343
SEATTLE, WA 98146

